

# 2022 Consumer Confidence Report

## Mountain River East Condominiums

2342040

### Introduction

Like any responsible public water system, our mission is to deliver the best quality drinking water and reliable service at lowest appropriate cost.

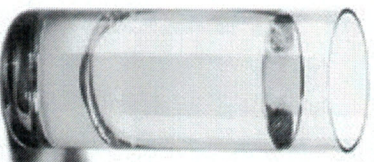
Aging infrastructure presents challenges to drinking water safety, and continuous improvement is needed to maintain the quality of life we desire for today and for the future.

In the coming year we intend to replace some aging pipes in well house.

These investments along with on-going operation and maintenance costs are supported by Mountain River East Association. When considering the high value we place on water, it is truly a bargain to have water service that protects public health, fights fires, supports businesses and the economy, and provides us with the high-quality of life we enjoy.

### What is a Consumer Confidence Report?

The Consumer Confidence Report (CCR) details the quality of your drinking water, where it comes from, and where you can get more information. This annual report documents all detected primary and secondary drinking water parameters, and compares them to their respective standards known as Maximum Contaminant Levels (MCLs).



### NOW IT COMES WITH A LIST OF INGREDIENTS.

**The sources of drinking water** (both tap water and bottled water) include rivers, lakes, streams, ponds, reservoirs, springs, and wells. As water travels over the surface of the land or through the ground, it dissolves naturally-occurring minerals and, in some

cases, radioactive material, and can pick up substances resulting from the presence of animals or from human activity.

**Contaminants that may be present** in source water include:

**Microbial contaminants**, such as viruses and bacteria, which may come from sewage treatment plants, septic systems, agricultural livestock operations, and wildlife.

**Inorganic contaminants**, such as salts and metals, which can be naturally occurring or result from urban storm water runoff, industrial or domestic wastewater discharges, oil and gas production, mining or farming.

**Pesticides and herbicides**, which may come from a variety of sources such as agriculture, urban storm-water runoff, and residential uses.

**Organic chemical contaminants**, including synthetic and volatile organic chemicals, which are by-products of industrial processes and petroleum production, and can also come from gas stations, urban storm water runoff, and septic systems.

**Radioactive contaminants**, which can be naturally-occurring or be the result of oil and gas production and mining activities.

**In order to ensure that tap water is safe to drink**, EPA prescribes regulations which limit the amount of certain contaminants in water provided by public water systems. The US Food and Drug Administration (FDA) regulations establish limits for contaminants in bottled water which must provide the same protection for public health.

### What is the source of my drinking water?

Mountain River East Condominium Association from two bedrock wells. Bedrock well #1 is 654 feet deep. And yields 15 gallons per minute. Bedrock well 2 is 525 feet deep and yields 20 gallons of water per minute. Water flows to 20,000-gallon storage tank. duplicate booster pumps then transfers the water to a 3,600gallon hydro-pneumatic storage tank. The water is not treated and is provided to 80 units at MRE(connections)to the distribution system.

**Why are contaminants in my water?** Drinking water, including bottled water, may reasonably be expected to contain at least small amounts of some contaminants. The presence of contaminants does not necessarily indicate that water poses a health risk. More information about contaminants and potential health effects can be obtained by calling the Environmental Protection Agency's Safe Drinking Water Hotline at 1-800-426-4791.

**Do I need to take special precautions?** Some people may be more vulnerable to contaminants in drinking water than the general population. Immunocompromised persons such as persons with cancer undergoing chemotherapy, persons who have undergone organ transplants, people with HIV/AIDS or other immune system disorders, some elderly, and infants can be particularly at risk from infections. These people should seek advice about drinking water from their health care providers. EPA/CDC guidelines on appropriate means to lessen the risk of infection by *Cryptosporidium* and other microbial contaminants are available from the Safe Drinking Water Hotline at 1-800-426-4791.

### Source Water Assessment Summary

DES prepared drinking water source assessment reports for all public water systems between 2000 and 2003 in an effort to assess the vulnerability of each of the state's public water supply sources. Included in the report is a map of each source water protection area, a list of potential and known contamination sources, and a summary of available protection options. The results of the assessment, prepared on 5/8/2001 are noted below.

Are noted . Mountain River East 2 susceptibility factors were rated high 1 was rated medium and 9 rated low.

Note: This information is over 12 years old and includes information that was current at the time the report was completed. Therefore, some of the ratings might be different if updated to reflect current information. At the present time, DES has no plans to update this data.

The complete Assessment Report is available for review at Mad River Property Management 603-254-7256 For more information, call Guy Tuchon 603-



726-7156 or visit the DES Drinking Water Source Assessment website at <http://des.nh.gov/organization/divisions/water/dwgb/dwspp/dwsap.htm>.

### How can I get involved?

For more information about your drinking water, please call *Email Board of Directors* or *Guy Tuchon 603-726-7156*. Although we do not have specific dates for public participation events or meetings, feel free to contact us with any questions you may have. Association meeting

### Definitions

**Ambient Groundwater Quality Standard** or **AGQS**: The maximum concentration levels for contaminants in groundwater that are established under RSA 485-C, the Groundwater Protection Act.

**Action Level** or **AL**: The concentration of a contaminant which, if exceeded, triggers treatment or other requirements which a water system must follow.

**Maximum Contaminant Level** or **MCL**: The highest level of a contaminant that is allowed in drinking water. MCLs are set as close to the MCLGs as feasible using the best available treatment technology.

**Maximum Contaminant Level Goal** or **MCLG**: The level of a contaminant in drinking water below which there is no known or expected risk to health. MCLGs allow for a margin of safety.

**Maximum Residual Disinfectant Level** or **MRDL**: The highest level of a disinfectant allowed in drink-

ing water. There is convincing evidence that addition of a disinfectant is necessary for control of microbial contaminants.

**Maximum Residual Disinfectant Level Goal** or **MRDLG**: The level of a drinking water disinfectant below which there is no known or expected risk to health. MRDLGs do not reflect the benefits of the use of disinfectants to control microbial contaminants.

**Treatment Technique** or **TT**: A required process intended to reduce the level of a contaminant in drinking water.

**Turbidity**: A measure of the cloudiness of the water. It is monitored by surface water systems because it is a good indicator of water quality and thus helps measure the effectiveness of the treatment process. High turbidity can hinder the effectiveness of disinfectants.

### Abbreviations

BDL: Below Detection Limit

mg/L: milligrams per Liter

NA: Not Applicable

ND: Not Detectable at testing limits

NTU: Nephelometric Turbidity Unit

pCi/L: picoCurie per Liter

ppb: parts per billion

ppm: parts per million

RAA: Running Annual Average

TTHM: Total Trihalomethanes

UCMR: Unregulated Contaminant Monitoring Rule

ug/L: micrograms per Liter

*THE FOLLOWING APPLIES if these contaminants are present - see table for detected levels.*

### Drinking Water Contaminants:

**Lead**: If present, elevated levels of lead can cause serious health problems, especially for pregnant women and young children. Lead in drinking water is primarily from materials and components associated with service lines and home plumbing. This water system is responsible for high quality drinking water, but can not control the variety of materials used in your plumbing components. When your water has been sitting for several hours, you can minimize the potential for lead exposure by flushing cold water from your tap for at least 30 seconds before using water for drinking or cooking. Do not use hot water for drinking and cooking. If you are concerned about lead in your water, you may wish to have your water tested. Information on lead in drinking water, testing methods, and steps you can take to minimize exposure is available from the Safe Drinking Water Hotline or at <http://water.epa.gov/drink/info/lead/index.cfm>

**Radon**: Radon is a radioactive gas that you can't see, taste or smell. It can move up through the ground and into a home through cracks and holes in the foundation. Radon can also get into indoor air when released from tap water from showering, washing dishes, and other household activities. It is a known human carcinogen. Breathing radon can lead to lung cancer. Drinking water containing radon may cause an increased risk of stomach cancer.



# MOUNTAIN RIVER EAST CONDOMINIUMS 2342040

## 2022 Report (2021 Data)

Contaminant (Units)	Action Level	90 <sup>th</sup> percentile sample value *	Date	# of sites above AL	Violation Yes/No	Likely Source of Contamination	Health Effects of Contaminant
Copper (ppm)	008					Corrosion of household plumbing systems; erosion of natural deposits; leaching from wood preservatives	Copper is an essential nutrient, but some people who drink water containing copper in excess of the action level over a relatively short amount of time could experience gastrointestinal distress. Some people who drink water containing copper in excess of the action level over many years could suffer liver or kidney damage. People with Wilson's Disease should consult their personal doctor.
Lead (ppb)	0					Corrosion of household plumbing systems, erosion of natural deposits	(15 ppb in more than 5%) Infants and young children are typically more vulnerable to lead in drinking water than the general population. It is possible that lead levels at your home may be higher than at other homes in the community as a result of materials used in your home's plumbing. If you are concerned about elevated lead levels in your home's water, you may wish to have your water tested and flush your tap for 30 seconds to 2 minutes before using tap water. Additional information is available from the Safe Drinking Water Hotline (800-426-4791), (above 15 ppb) Infants and children who drink water containing lead in excess of the action level could experience delays in their physical or mental development. Children could show slight deficits in attention span and learning abilities. Adults who drink this water over many years could develop kidney problems or high blood pressure.



Contaminant (Units)	Level Detected	MCL	MCL G	Violated on NO	Likely Source of Contamination	Health Effects of Contaminant
<b>Radioactive Contaminants</b>						
Compliance Gross Alpha (pCi/L)	1.9	15	0		Erosion of natural deposits	Certain minerals are radioactive and may emit a form of radiation known as alpha radiation. Some people who drink water containing alpha emitters in excess of the MCL over many years may have an increased risk of getting cancer.
Uranium (ug/L)	1.6	30	0		Erosion of natural deposits	Some people who drink water containing uranium in excess of the MCL over many years may have an increased risk of getting cancer and kidney toxicity.
Combined Radium 226 + 228 (pCi/L)	2.2	5	0		Erosion of natural deposits	Some people who drink water containing radium 226 or 228 in excess of the MCL over many years may have an increased risk of getting cancer.
Barium (ppm)		2	2		Discharges of drilling wastes, discharge from metal refineries, erosion of natural deposits	Some people who drink water containing barium in excess of the MCL over many years could experience an increase in their blood pressure.
Fluoride (ppm)	31	4	4		Erosion of natural deposits, water additive which promotes strong teeth, discharge from fertilizer and aluminum factories	Some people who drink water containing fluoride in excess of the MCL over many years could get bone disease, including pain and tenderness of the bones. Fluoride in drinking water at half the MCL or more may cause mottling of children's teeth, usually in children less than nine years old. Mottling also known as dental fluorosis, may include brown staining and/or pitting of the teeth, and occurs only in developing teeth before they erupt from the gums.
Combined Radium 226 + 228 (pCi/L)	6	5	0		Erosion of natural deposits	Some people who drink water containing radium 226 or 228 in excess of the MCL over many years may have an increased risk of getting cancer.
Arsenic (ppb)	1	10	0		Erosion of natural deposits, runoff from orchards	(5 ppb through 10 ppb) While your drinking water meets EPA's standard for arsenic, it does contain low levels of arsenic. EPA's standard balances the current understanding of arsenic's possible health effects against the costs of removing arsenic from drinking water.